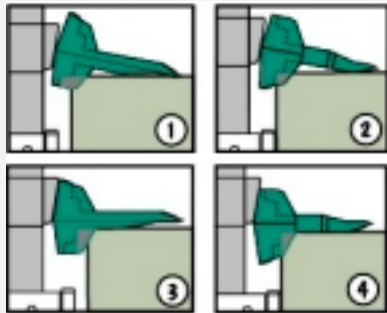
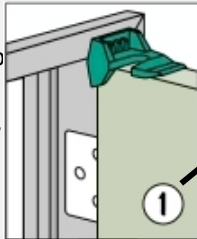


Wedge-it

The ultimate portable doorstop Holds doors open 3 ways

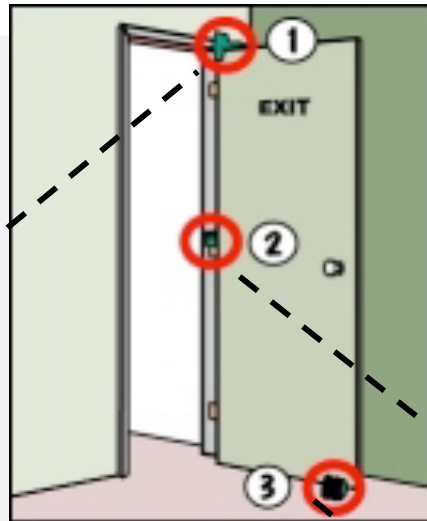
The in 4 colors available **WEDGE-IT** can be placed in any of 3 locations on a standard door and provides a simple and effective way of holding doors open at a 90° angle.

With the door open to 90°, **WEDGE-IT** can be placed on top of a door between door and door jamb, in any of 4 adjustable positions

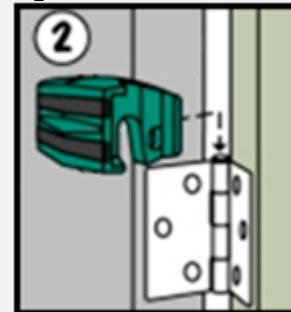


WEDGE-IT is designed with 4 different settings to fit between the top of the door and the door jamb. This is because that distance can vary between different doors.

*When over the hinge pin application is used, attempts to close the door should be avoided. As damage may occur. **WEDGE-IT** is designed as a temporary door stop and fire doors should not be held open.*



WEDGE-IT can be used on the floor like traditional wooden or rubber door stop.



With door open to a 90°, place **WEDGE-IT** over hinge pin between door and door jamb.

Police

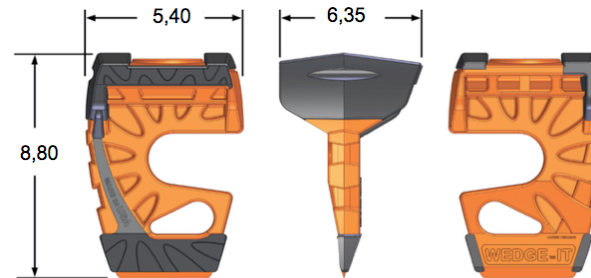
Keeping doors open for;

- Entry.
- Suspect transport.
- Removal of confiscated materials
- Securing escape route

Fire Department

Keeping doors open for;

- Search and rescue
- Patient transport
- Smoke removal
- Water hose transport



Its unique Lexan™ plastic ribbed construction makes the Wedge-It virtually indestructible. With nonskid rubber pads to prevent moving while placed under door. Hole is provided to assist with carrying.

The **WEDGE-IT** can also be printed with any desired text or logo in any color !

